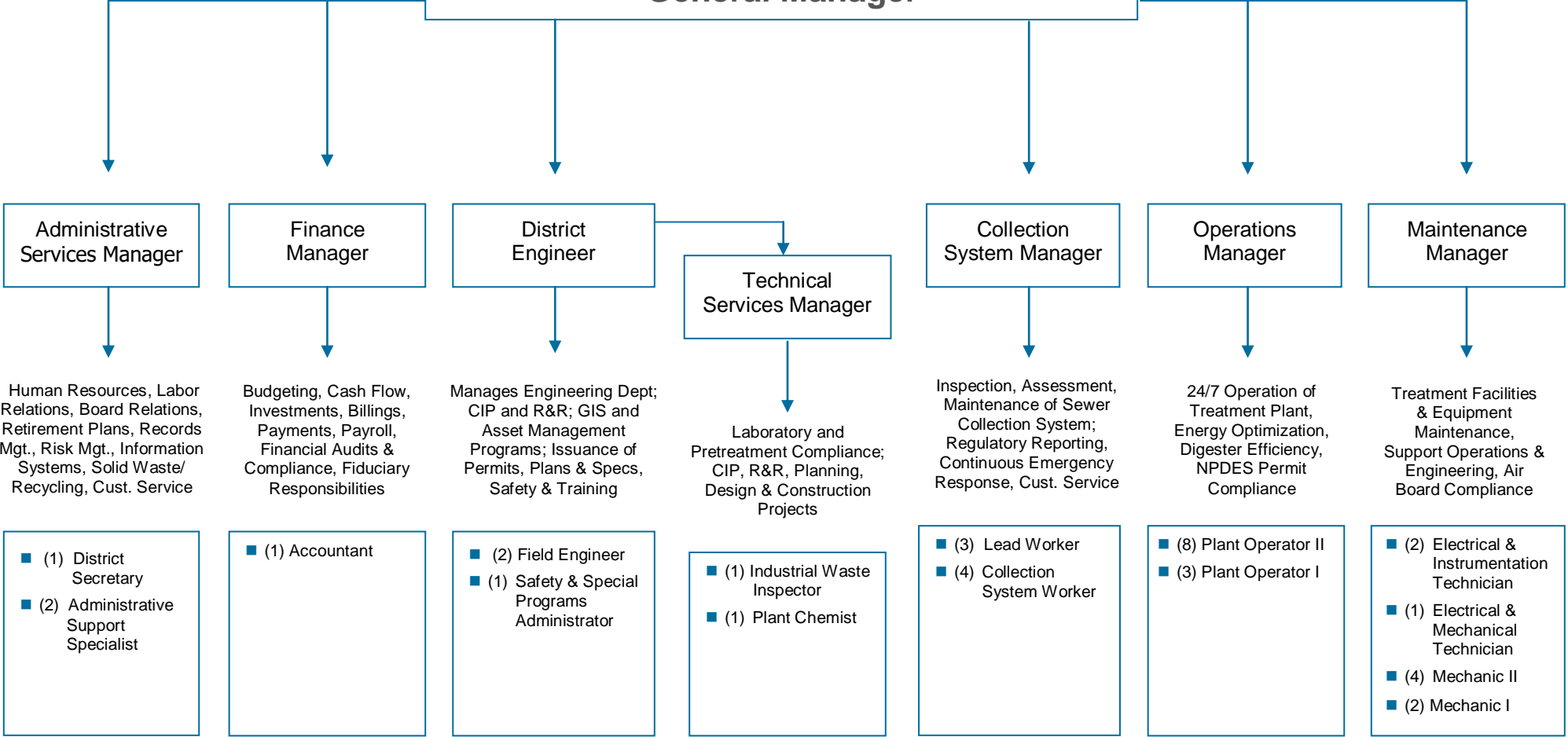




# Oro Loma Sanitary District Customers

## Elected Board of Directors

### General Manager



**Administrative Services Manager**

Human Resources, Labor Relations, Board Relations, Retirement Plans, Records Mgt., Risk Mgt., Information Systems, Solid Waste/ Recycling, Cust. Service

- (1) District Secretary
- (2) Administrative Support Specialist

**Finance Manager**

Budgeting, Cash Flow, Investments, Billings, Payments, Payroll, Financial Audits & Compliance, Fiduciary Responsibilities

- (1) Accountant

**District Engineer**

Manages Engineering Dept; CIP and R&R; GIS and Asset Management Programs; Issuance of Permits, Plans & Specs, Safety & Training

- (2) Field Engineer
- (1) Safety & Special Programs Administrator

**Technical Services Manager**

Laboratory and Pretreatment Compliance; CIP, R&R, Planning, Design & Construction Projects

- (1) Industrial Waste Inspector
- (1) Plant Chemist

**Collection System Manager**

Inspection, Assessment, Maintenance of Sewer Collection System; Regulatory Reporting, Continuous Emergency Response, Cust. Service

- (3) Lead Worker
- (4) Collection System Worker

**Operations Manager**

24/7 Operation of Treatment Plant, Energy Optimization, Digester Efficiency, NPDES Permit Compliance

- (8) Plant Operator II
- (3) Plant Operator I

**Maintenance Manager**

Treatment Facilities & Equipment Maintenance, Support Operations & Engineering, Air Board Compliance

- (2) Electrical & Instrumentation Technician
- (1) Electrical & Mechanical Technician
- (4) Mechanic II
- (2) Mechanic I