

FLUSH RIGHT!

8 Things to Know




ORO LOMA SANITARY DISTRICT

WHEN WE FLUSH THE WRONG THINGS down the toilet, bad things happen. Our wastewater treatment facility isn't designed to handle things like wipes, which clog, or dental floss and hair, which get tangled in pipes and equipment.




OROLOMA.ORG/FLUSH-RIGHT

1 ONLY FLUSH THE 3Ps 
Pee, Poop, and (toilet) Paper

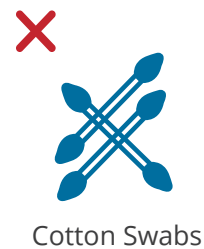
2 THERE IS NO SUBSTITUTE FOR TOILET PAPER! Toilet paper is created for use in the sewer system. Paper towels, tissues, wipes, and other paper products don't break down and cause clogs.

4 FLUSHED WIPES ALONE RESULT IN SOME \$441 MILLION a year in additional operating costs at US wastewater facilities.*
*National Association of Clean Water Agencies



3 WHY IS IT IMPORTANT TO FLUSH RIGHT?
Flushing things that cause blockages damages your home, our equipment, and the environment!
Yikes. 

5 NEVER FLUSH THESE TOP FLUSH OFFENDERS!



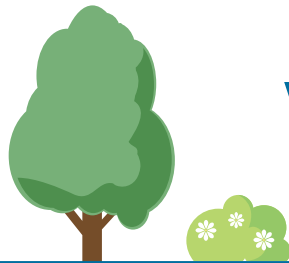
6

“FLUSHABLE” WIPES SHOULD NEVER BE FLUSHED!

They clog pipes and equipment.



Wipes turn into a BIG mess when they are flushed down the toilet!



What Happens When We Flush?



Wastewater Treatment Plant



7

Things may go down the toilet **BUT THEY GET CLOGGED IN THE SEWER PIPES!**

8

MEDICATIONS DON'T GO DOWN THE TOILET OR IN THE TRASH!

They can harm our water supply and wildlife. Visit www.stopwaste.org/medicine for drop-off details.



ORO LOMA SANITARY DISTRICT

serves over 135,000 people.
46,000 households and
1,000 businesses.

info@OroLoma.org
(510) 276-4700
OroLoma.org

