



Oro Loma Sanitary District  
2600 Grant Avenue  
San Lorenzo, CA 94580

Printed on recycled paper

IMPORTANT INFORMATION  
Deadline for the Oro Loma  
Earth Day 2003  
Poster Contest  
is March 19

## Spotlight on Excellence: Steve Leggett

In early February 2003, close to 50 of Steve Leggett's friends and co-workers gathered to wish the Senior Plant Operator a hearty farewell and good luck. After nearly 33 years at Oro Loma, Steve Leggett was retiring.

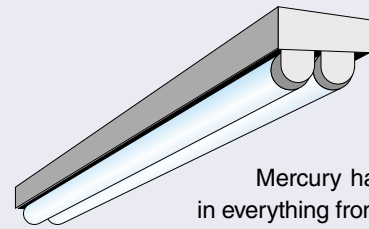
Oh, and they gave him a really nifty digital camera, too. That's so he can take pictures of all the fish he's planning to catch.

In 1970, Steve arrived at Oro Loma as a treatment plant Operator-In-Training (OIT). In order to be certified for a Class Three Operator's license, which would allow him to take on the responsibilities of a Senior Plant Operator, Steve had to spend many hours in course work and testing. He also needed someone to train him in Oro Loma operations. Once he became a Senior Plant Operator, it was Steve's turn to train others. Steve became more than a trainer, he became a mentor to the incoming OITs. In fact, every operator at Oro Loma today has benefited from Steve's tutelage and guidance.

As a Senior Plant Operator, Steve was one of six people responsible for the maintenance and operation of the entire wastewater treatment plant. Since Oro Loma operates 24 hours a day, seven days a week, some people have to work weekends and nights. For the past 22 years, one of those people has been Steve. He has worked the weekend day shift — Friday, Saturday, and Sunday — and the Monday and Tuesday swing shift from 3 p.m.-11 p.m. And he claims to have loved it, even if it has meant missing some of his favorite TV shows.

Steve lives in Newark with his wife, Juli. He has three grown children and two grandchildren, with another on the way. In addition to fishing, Steve plans to spend time in his workshop and travel with Juli.

In addition to being known for his extremely high level of competence, Steve's tenure at Oro Loma was distinguished by his honesty, his directness, and his ability to find solutions in complex situations. These characteristics made him both a valued employee and a trusted co-worker. He will be sorely missed, but with the legacy he leaves behind, Oro Loma is in good hands.



## Pollution Prevention

Mercury has been used for centuries in everything from mining to paints and pesticides. Today, mercury is commonly found at home in batteries, toys, fluorescent lamps, thermometers, and thermostats. Mercury is a toxic pollutant that builds up in the human body and can cause damage to the nervous system and to the kidneys, liver, or skin.

A significant source of today's mercury contamination comes from consumer items that are not disposed of properly. Mercury thermometers and other household items that contain mercury may be safely discarded at the Household Hazardous Waste sites listed below. For more information, call (800) 606-6606 or email [HHW@co.alameda.ca.us](mailto:HHW@co.alameda.ca.us). For information on the effects of mercury contamination on the environment, visit the US Environmental Agency site at [www.epa.gov](http://www.epa.gov) or the US Geological Survey at [www.usgs.gov](http://www.usgs.gov).



### Household Hazardous Waste Sites and Hours

**Drop-off hours** (no appointment necessary):  
**Thur & Fri:** 9 a.m.-1 p.m.  
**Sat:** 9-11:30 a.m.

### Facilities and dates:

**Oakland**  
**2100 East 7th Street**  
Mar 20, 21, 22  
Apr 10, 11, 12  
May 8, 9, 10  
**Hayward**  
**2091 W. Winton Ave.**  
Apr 3, 4, 5  
Apr 24, 25, 26  
May 1, 2, 3

**Livermore**  
**5584 La Ribera Avenue**  
Mar 13, 14, 15  
Apr 17, 18, 19  
May 15, 16, 17

**Appointments**  
Call toll-free  
(800) 606-6606 or email  
[HHW@co.alameda.ca.us](mailto:HHW@co.alameda.ca.us)  
**Oakland**  
Mar 19, Apr 23, May 21  
**Hayward**  
Mar 12, Apr 16, May 14  
**Livermore**  
Mar 5, Apr 2, May 7

PRSRT STD  
US POSTAGE  
PAID  
OAKLAND CA  
PERMIT NO. 591



San Lorenzo, CA

(510) 276-4700

[www.oroloma.org](http://www.oroloma.org)

Spring 2003

Issue 31

### Board of Directors

Laython N. Landis  
*President*  
Roland J. Dias  
*Vice President*  
Frank V. Sidari  
*Secretary*  
Herbert G. Crowle  
*Director*  
Howard W. Kerr  
*Director*

### General Manager

Michael C. Cameron

### Editor

Marta Boerger

## Inside

- Material Recovery Facility
- Ask Sam
- Recycling Schedules
- From the President
- Spring Cleaning
- Surveys Requested
- Spotlight on Excellence: Steve Leggett
- Pollution Prevention

Oro Loma Sanitary District  
2600 Grant Avenue  
San Lorenzo, CA 94580  
(510) 276-4700

[www.oroloma.org](http://www.oroloma.org)

Questions:  
[info@oroloma.org](mailto:info@oroloma.org)

Comments:  
[InMyOpinion@oroloma.org](mailto:InMyOpinion@oroloma.org)

# ORO LOMA NEWS

## Oro Loma Earth Day 2003 Poster Contest Is Underway



Throughout the Oro Loma Sanitary District, students have been using their pencils, pens, and brushes to create entries for the ninth annual Oro Loma/Waste Management Earth Day Poster Contest. Every student in grades K-12 who attends a school in the District is eligible to enter.

The theme this year is **"Don't Break the Chain — Be a Link! Buy Recycled,"** so students have the chance to show why it is important to buy products made with recycled content. The prize money — \$500 for first place, \$300 for second place, \$200 for third place,

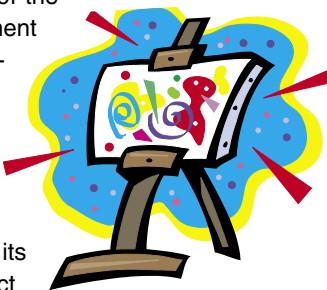
and \$100 each for two honorable mentions in six different grade groups — is certainly making the students try extra hard to be creative. Not only that, but for every dollar a student wins, his or her school gets a matching cash prize. Last year, Oro Loma, and the contest cosponsor, Waste Management, awarded a total of \$14,400 to winning students and to their schools. The same amount will be awarded this year. But prize money is only part of the reason to enter the contest. By recycling, students help the environment and their community. What better way to learn about this important subject than by using those pencils, pens, and brushes to create a stunning poster?

The contest ends March 19, 2003, and winners will be announced on Earth Day, April 22, 2003. Students can get free poster paper, with entry forms printed on the back, at schools in the Oro Loma Sanitary District, at Waste Management's Oakland office (172 98th Avenue), at its Hayward office (22770 Main Street), and at the Oro Loma Sanitary District office (2600 Grant Avenue, San Lorenzo). Students can also download an entry form from the Oro Loma Web site at [www.oroloma.org](http://www.oroloma.org). An entry form is also printed in the Oro Loma 2002-2003 calendar. Calendars are available free from Oro Loma.

A selection of winning posters may be featured in the Oro Loma 2003-2004 calendar, and all posters will be returned to the students' schools.

Students who want to learn more about the Oro Loma Earth Day 2003 Poster Contest should call the contest hotline at (510) 613-2855 or visit [www.oroloma.org](http://www.oroloma.org).

Good luck!



## Four Reasons to Buy Recycled

1. Save Natural Resources
2. Save Energy
3. Save Landfill Space
4. Save Money and Create Jobs

(To learn more about why it is important to buy items made with recycled content, go to [www.oroloma.org](http://www.oroloma.org).)





You do a great job recycling your plastic containers, jars, bottles, cans, newspapers, cardboard, and mixed paper. You put your garden waste in your green recycling cart for pickup. You even recycle your used motor oil. And for that, you deserve the thanks of your neighbors

and your community. Your efforts are helping to keep valuable resources from ending up in landfill.

But do you ever wonder what happens to all the really big stuff, all those things that end up in those roll-off bins at construction and demolition sites, for example? Until recently, a great deal of that material went straight to the landfill. Like your household trash, however, much of what ends up in construction site roll-off bins can be recovered and recycled. A new waste Management facility at the Davis Street Station for Material Recycling and Transfer is doing just that.



The Material Recovery Facility (MRF) is a state-of-the-art sorting and recycling center that uses an assembly line to recover recyclable components from dry construction and demolition debris.

Every day, tons

of debris from building and demolition sites, from garages and basements come to the MRF for sorting. Workers on an assembly line first remove the large pieces of cardboard, paper, wood, bottles, and metal and send them down chutes for recycling. Objects that cannot be recycled, such as painted wood, sheetrock, brick, concrete, plastic film, and pieces of carpet are sent to landfill. Smaller and smaller pieces are removed from the line for recycling until all that is left are tiny bits of debris. Huge drums turn and sift this material while a magnet removes any ferrous items. What is left is between 2" and 3/8". This substance is called "dirt" or "fines." The dirt made of the smallest particles is used to construct roadbeds at landfills and the coarser material is used to cap garbage at the site.

The MRF recovers thousands of pounds of recyclable material that would otherwise be headed for landfill. As an individual, you may feel your contribution is insignificant by comparison. Both, however, are vital in the ongoing effort to conserve vital natural resources and divert trash from landfill.



Photos  
Top left: Debris from construction and demolition sites is brought to the MRF for sorting;  
Bottom left: Recyclable material is picked off the assembly line; Top right: Huge screens sift material into smaller and smaller pieces; Bottom right: This pile of "dirt" will be used to construct roadways at landfills.



Dear Sam —

In the last newsletter I read about the compressed natural gas recycling trucks that Oro Loma is considering switching over to. Any word on them yet?

## Just Wondering

*Dear Just Wondering—*

Those CNG trucks sound pretty cool, don't they? However, before committing to any changes, Oro Loma wants to make sure customers are getting the best deal possible. They are checking everything out very carefully before making a recommendation. Where will customers need to place their recycling carts? What are all the advantages? You can be sure of one thing: There won't be any rate increase because of the new trucks! Stay tuned — there'll be more information coming out in the weeks ahead.



By now, you should have received your 2003 recycling schedule. If you haven't, call (510) 613-8710 to get yours.

Recycling schedules are also available online at [www.oroloma.org](http://www.oroloma.org).

### IMPORTANT PHONE NUMBERS

**RESIDENTIAL RECYCLING INFORMATION**  
 Rapid Response Recycling (800) 633-8710  
 (907) 485-7272

**RESIDENTIAL GARBAGE INFORMATION**  
 Rapid Response Recycling (800) 633-8710  
 (907) 485-7272

**ANNUAL BULKY WASTE CLEANUP INFORMATION**  
 Rapid Response Recycling (800) 633-8710  
 (907) 485-7272

**GENERAL RECYCLING INFORMATION**  
 Waste Consulting (Hawaii) (808) 444-5001  
 Davis & S - SMART Center (808) 638-2003  
 County Recycling Hotline (808) 727-3706/3764

**GARBAGE, USED OILS, WASTE DROP OFF**  
 Rapid Response Recycling (800) 633-8710  
 (907) 485-7272

**HOUSEHOLD HAZARDOUS WASTE DROP OFF**  
 Top of the House (808) 538-5500  
 (907) 485-7272

### IMPORTANT COLLECTION INFORMATION


Tires and green cans are collected at curbside EVERY week on your regular trash pickup day. **RECYCLED METALS** are collected on your regular trash pickup day. **RECYCLED GLASS** is collected on your regular trash pickup day.

**What your pickup day does NOT include:**


- The following additional pickups are scheduled in 2003:
- Large Appliances:** Stoves, Dishwashers, Washers, Dryers, A/C Units, Freezers, etc.
- Chimneys:** Metal and Masonry
- Refrigerators:** Recycled and Non-Recycled
- Stoves:** Recycled and Non-Recycled

If you pickup day falls any one of these holidays or falls any of these dates, please call your waste hauler to see what the best day for you is.

2003											
Jan			Feb			Mar			Apr		
1	2	3	4	5	6	7	8	9	10	11	12
1	2	3	4	5	6	7	8	9	10	11	12
13	14	15	16	17	18	19	20	21	22	23	24
25	26	27	28	29	30	31					
1	2	3	4	5	6	7	8	9	10	11	12
13	14	15	16	17	18	19	20	21	22	23	24
25	26	27	28	29	30	31					
1	2	3	4	5	6	7	8	9	10	11	12
13	14	15	16	17	18	19	20	21	22	23	24
25	26	27	28	29	30	31					
1	2	3	4	5	6	7	8	9	10	11	12
13	14	15	16	17	18	19	20	21	22	23	24
25	26	27	28	29	30	31					
1	2	3	4	5	6	7	8	9	10	11	12
13	14	15	16	17	18	19	20	21	22	23	24
25	26	27	28	29	30	31					
1	2	3	4	5	6	7	8	9	10	11	12
13	14	15	16	17	18	19	20	21	22	23	24
25	26	27	28	29	30	31					



**One Lani,  
Hawaii District**



## Budget Crisis and Stealth Taxes

Just over four years ago, the State of California had a budget surplus of approximately \$4 billion. As I write this column, the State now has a deficit of between \$26 and \$34 billion for this year alone. The governor and the legislature are contemplating several new taxes, but as with icebergs, the largest part is below the surface and invisible.

One way to increase State funds, without calling it a “tax,” is to increase fees charged by the State. This process has already begun as regulatory agencies — such as the State Water Resources Control Board (which has jurisdiction over sanitary districts) — have been directed by the State to increase fees so that the regulated agencies pay the entire cost of being regulated.

For instance, the fee paid for a regular permit to discharge treated sewage water into the San Francisco Bay is scheduled to increase this year more than three-fold from \$10,000 per year paid in 2002 to over \$30,000 in 2003.

Your sanitary district is highly regulated by a number of state and federal agencies, and we expect similar cost increases from those as well. By now, I'm sure you see the picture. These fee increases have no limits in increasing state revenues while the process avoids legislative review or accountability. Your Board of Directors is doing its best to combat these stealth money-raising tactics, but, ultimately, the Oro Loma Sanitary District is forced to accept these additional costs and, unfortunately, must pass them along to you, the ratepayer.

The State is also seriously considering taking away ad valorem tax revenue (funds assessed and raised locally through property taxes) that is collected by many sanitary districts throughout the state. This will create significant budget shortfalls for those districts. Now for some good news! The Oro Loma Sanitary District is a fee-based district and long ago declined to accept ad valorem taxes. Therefore, the State's actions in this area will not decrease Oro Loma's revenue base.

The dire economic difficulties California is now experiencing are reflected in the personal financial challenges faced by many in our District. News of possible rate increases, even if unavoidable, cannot be welcomed information. The Board of Directors and I want you to know that we are doing everything possible to control and mitigate these increases. We remain committed to providing the best possible service at the lowest possible cost.

Have you started thinking about your spring cleaning yet? Before throwing out useful items from your garage or basement, consider donating them to charity or holding a garage sale. Old magazines and newspapers can be recycled, as can corrugated cardboard and many types of plastic and metal containers. For a complete list of what is accepted for recycling pickup visit [www.oroloma.org](http://www.oroloma.org). For other items, remember, as an Oro Loma residential customer you are entitled to a free bulky waste pickup per calendar year. Pickup is by appointment only. Call Waste Management at (510) 613-8710 at least two weeks in advance to schedule your date. Below is a list of what is and what is not accepted for bulky waste pickup.

## ITEMS THAT ARE ACCEPTED FOR PICKUP

- Trash in bags or disposable cartons (up to 2 cubic yards, which is approximately 16 large trash bags, or a stack 3' x 3' x 6')
- Bundled tree limbs, brush, etc. (not more than 4' in length and 12" in diameter)
- Passenger car tires (up to 4)
- Household furniture (up to 3 large items)



### **Placement without a curb**



**Curbside Placement** (Do not block sidewalk)

*Please have items available for pickup by 5:30 a.m., but do not set them out until the night before. Place pickup items in the street, next to the curb if available. Do not block the sidewalk. Make sure large or bulky items do not topple or roll into the street. Cover an area no more than one car space.*

## ITEMS THAT ARE NOT ACCEPTED

- Rocks, dirt, and concrete
- Any single item over 75 lbs.
- Hazardous materials, such as pesticides, paint, solvents, gasoline, antifreeze, and batteries.



Safe, convenient, and free household hazardous material disposal is available to Oro Loma customers. Call (800) 606-6606 for drop-off locations and times. Information is also available on the Web at [www.household-hazwaste.org](http://www.household-hazwaste.org).

## Surveys Requested

The District needs your input to better serve you. Please visit [www.oroloma.org](http://www.oroloma.org) and fill out the on-line pollution prevention survey. It will only take a few minutes and your responses will help us tailor our outreach material to suit your needs.